



Beaufort County Public Works Stormwater Infrastructure Project Summary

Project Summary: Okatie East Retrofit

Activity: Water Quality

Narrative Description of Project:

Completion: Feb-14

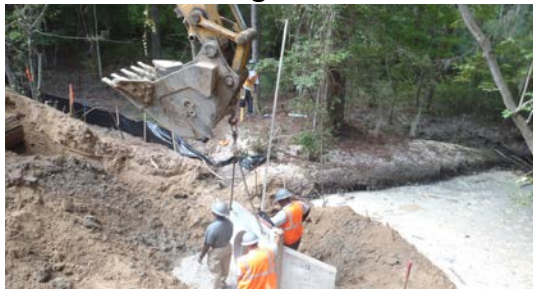
Extensive rework required due to design issues. Grubbed and cleared 1,200 L.F. of access. Removed old structure. Installed (1) precast concrete box, 40 L.F. of channel pipe, (1) headwall, (1) canal gate, (2) access gates and 280 square yards of rip rap for erosion control. Hydroseeded for erosion control.

2012-006 / Okatie East Retrofit	Labor Hours	Labor Cost	Equipment Cost	Material Cost	Contractor Cost	Indirect Labor	Total Cost
AGI / Access Gate - Installed	15.0	\$337.44	\$97.62	\$167.26	\$0.00	\$231.85	\$834.16
AUDIT / Audit Project	2.0	\$40.92	\$0.00	\$0.00	\$0.00	\$26.46	\$67.38
AW / Administrative Work	4.0	\$177.08	\$0.00	\$0.00	\$0.00	\$135.84	\$312.92
BKFILL / Back Fill	40.0	\$900.45	\$239.20	\$90.01	\$0.00	\$573.90	\$1,803.57
CBINS / Catch basin - installed	48.0	\$1,090.18	\$329.88	\$2,483.86	\$0.00	\$683.88	\$4,587.80
FLAPGATE / Flapgate - Installed	51.0	\$1,170.23	\$180.82	\$4,878.86	\$0.00	\$772.82	\$7,002.73
HAUL / Hauling	220.0	\$4,766.92	\$2,295.24	\$11,980.11	\$0.00	\$3,176.33	\$22,218.60
HYDR / Hydroseeding	71.0	\$1,649.87	\$184.66	\$510.60	\$0.00	\$1,062.48	\$3,407.61
OFPI / Outfall Pipe - Installation	48.0	\$1,066.49	\$290.85	\$3,125.60	\$0.00	\$679.74	\$5,162.68
ONJV / Onsite Job Visit	119.0	\$3,978.38	\$430.78	\$242.53	\$0.00	\$2,653.49	\$7,305.18
PP / Project Preparation	19.0	\$504.75	\$32.58	\$94.32	\$0.00	\$329.82	\$961.47
PROFS / Professional Services	0.0	\$0.00	\$0.00	\$0.00	\$51,853.33	\$0.00	\$51,853.33
RB / Remove blockage from flowline	4.0	\$88.87	\$7.24	\$11.44	\$0.00	\$57.36	\$164.91
RPWO / Repaired Washout	9.0	\$213.06	\$27.49	\$66.12	\$0.00	\$136.17	\$442.84
RRI / Rip Rap - Installed	110.0	\$2,537.22	\$659.48	\$525.67	\$0.00	\$1,634.10	\$5,356.47
SC / Sediment Control	15.0	\$343.36	\$18.10	\$71.59	\$0.00	\$231.85	\$664.90
SG / Shoot Grade	2.0	\$44.44	\$3.62	\$8.58	\$0.00	\$25.65	\$82.29
UTLOC / Utility locates	2.5	\$98.77	\$7.24	\$11.44	\$0.00	\$74.54	\$191.99
WSBH / Workshelf - Bush Hogged	10.0	\$228.02	\$36.38	\$39.72	\$0.00	\$148.50	\$452.61
WSDR / Workshelf - Dressed	68.0	\$1,483.29	\$303.60	\$243.88	\$0.00	\$946.29	\$2,977.06
WSGRB / Workshelf - Grubbed	90.0	\$2,010.14	\$658.80	\$529.51	\$0.00	\$1,293.16	\$4,491.61
2012-006 / Okatie East Retrofit Sub Total	947.5	\$22,729.87	\$5,803.58	\$25,081.10	\$51,853.33	\$14,874.22	\$120,342.10
Grand Total	947.5	\$22,729.87	\$5,803.58	\$25,081.10	\$51,853.33	\$14,874.22	\$120,342.10

Before



During



After



**Project: Okatie
East Retrofit**

**Activity: Water
Quality**

**Project #:
2012-006**

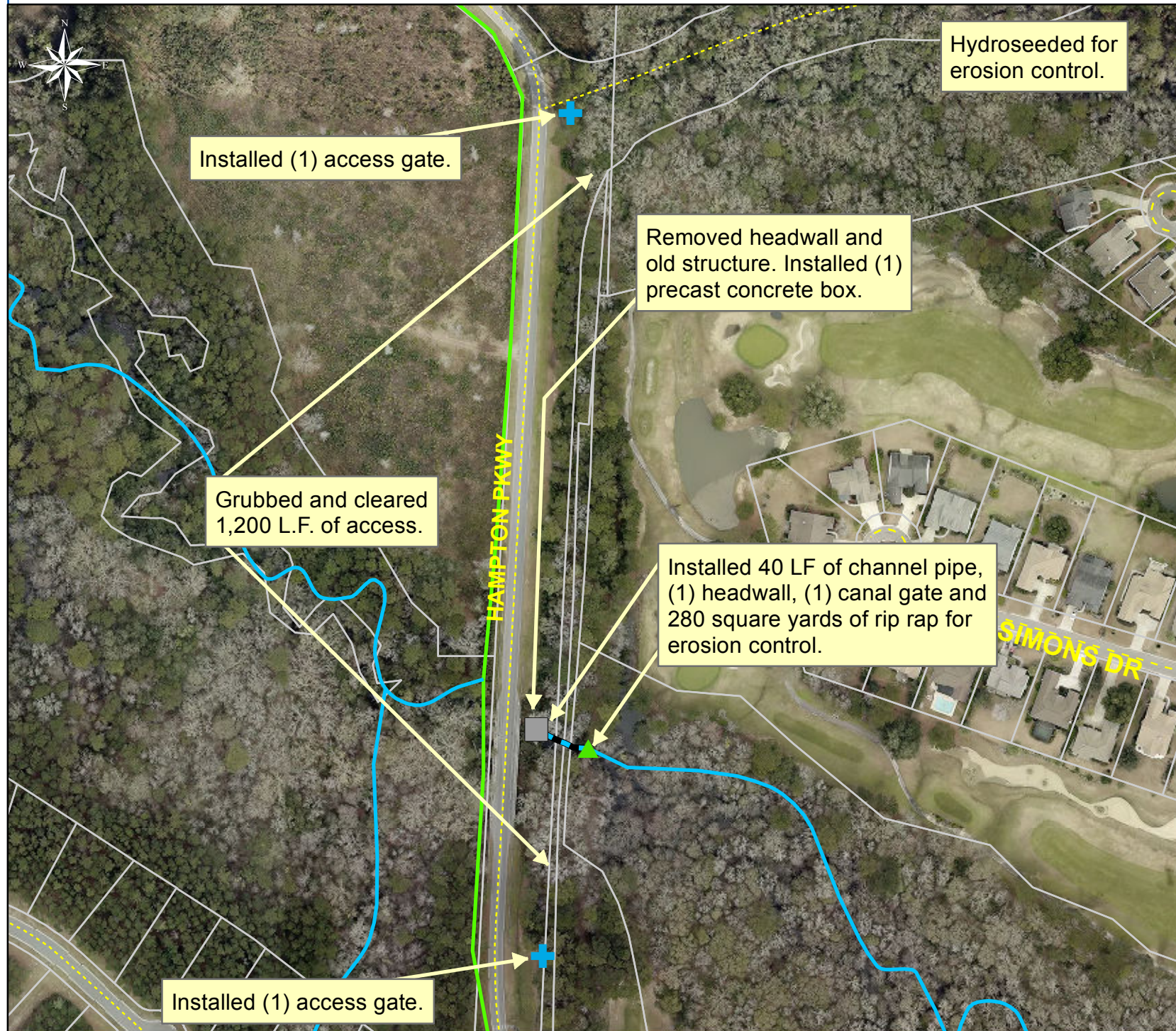
**Township:
Bluffton**

**Completed:
February 2014**

Legend

TYPE

- River
- Creek/Stream
- River/Creek/Marsh BANK
- Channel (fka Outfall)
- Channel Pipe
- Lateral
- Lateral Pipe
- Roadside
- Roadside Pipe
- Road Pipe
- Crossline Pipe
- Driveway Pipe
- Access Pipe
- Bleeder Pipe
- ▲ Headwall
- Concrete Box



1 inch = 207 feet